

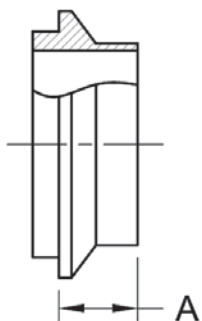


## I-LINE FITTINGS

### Don't See What You Need?

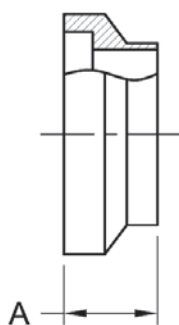
We have more than 35,000 unique part numbers in our inventory. We'll be happy to help you find what you need or we can manufacture a custom fabrication or custom machined fitting to your specification. If you don't see what you need give us a call at 1-585-492-5800

**14WI - SHORT WELD FERRULE, MALE**



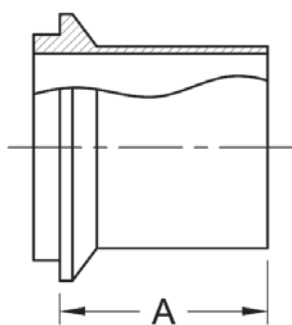
PART NUMBER	SIZE	A
14WI-1	1	.589
14WI-1.5	1-1/2	.746
14WI-2	2	.780
14WI-2.5	2-1/2	.850
14WI-3	3	.912
14WI-4	4	1.037
14WI-6	6	.818
14WI-8	8	.818

**15WI - SHORT WELD FERRULE, FEMALE**



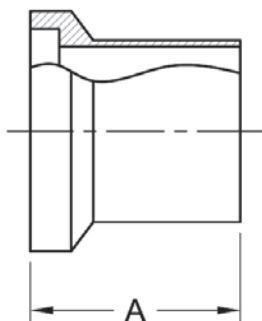
PART NUMBER	SIZE	A
15WI-1	1	.786
15WI-1.5	1-1/2	.942
15WI-2	2	1.036
15WI-2.5	2-1/2	1.161
15WI-3	3	1.223
15WI-4	4	1.348
15WI-6	6	1.130
15WI-8	8	1.130

**14WLI - LONG WELD FERRULE, MALE**



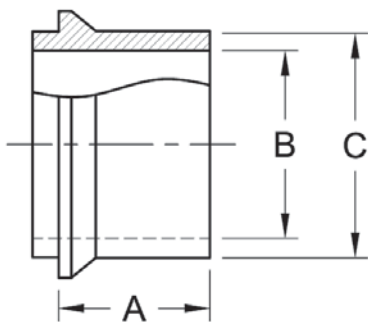
PART NUMBER	SIZE	A
14WLI-1	1	1.562
14WLI-1.5	1-1/2	1.843
14WLI-2	2	2.062
14WLI-2.5	2-1/2	2.500
14WLI-3	3	2.375
14WLI-4	4	2.688
14WLI-6	6	3.813

15WLI - LONG WELD FERRULE, FEMALE



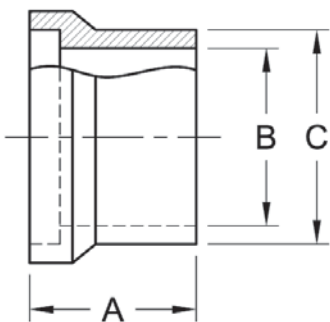
PART NUMBER	SIZE	A
15WLI-1	1	1.750
15WLI-1.5	1-1/2	2.031
15WLI-2	2	2.312
15WLI-2.5	2-1/2	2.500
15WLI-3	3	2.688
15WLI-4	4	3.000
15WLI-6	6	3.000

14WHI - TANK WELD FERRULE, MALE



PART NUMBER	SIZE	A	B	C
14WHI-1	1	1.312	.870	1.250
14WHI-1.5	1-1/2	1.437	1.370	1.688
14WHI-2	2	1.500	1.870	2.250
14WHI-2.5	2-1/2	1.437	2.370	2.750
14WHI-3	3	1.500	2.870	3.313
14WHI-4	4	1.812	3.834	4.250

15WHI - TANK WELD FERRULE, FEMALE



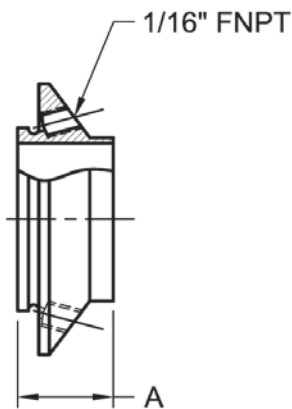
PART NUMBER	SIZE	A	B	C
15WHI-1	1	1.500	.870	1.250
15WHI-1.5	1-1/2	1.625	1.370	1.688
15WHI-2	2	1.750	1.870	2.250
15WHI-2.5	2-1/2	1.750	2.370	2.750
15WHI-3	3	1.812	2.870	3.313
15WHI-4	4	2.125	3.834	4.250

15WNI - ASEPTIC, FEMALE



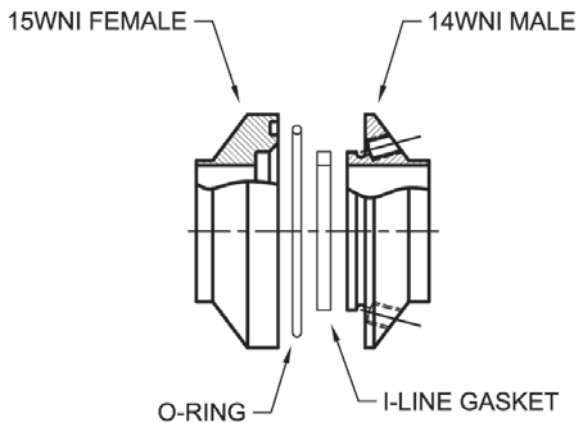
PART NUMBER	SIZE	A
15WNI-1	1	.942
15WNI-1.5	1-1/2	1.036
15WNI-2	2	1.161
15WNI-2.5	2-1/2	1.223
15WNI-3	3	1.348
15WNI-4	4	1.348

14WNI - ASEPTIC, MALE



PART NUMBER	SIZE	A
14WNI-1	1	.942
14WNI-1.5	1-1/2	1.036
14WNI-2	2	1.161
14WNI-2.5	2-1/2	1.223
14WNI-3	3	1.348
14WNI-4	4	1.348

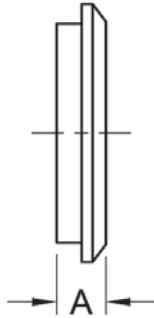
ASEPTIC UNION



PART NUMBER	SIZE
29WNI-1	1
29WNI-1.5	1-1/2
29WNI-2	2
29WNI-2.5	2-1/2
29WNI-3	3
29WNI-4	4

CLAMP NOT SHOWN FOR CLARITY

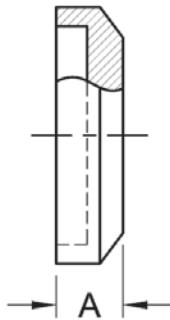
**16AI-14I - SOLID END CAP, MALE**



PART NUMBER	SIZE	A
16AI-14I-1	1	.505
16AI-14I-1.5	1-1/2	.505
16AI-14I-2	2	.505
16AI-14I-2.5	2-1/2	.692
16AI-14I-3	3	.692
16AI-14I-4	4	.755
16AI-14I-6	6	.755

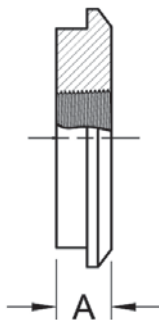
NOTE: AVAILABLE IN ACRYLIC AND LEXAN

**16AI-15I - SOLID END CAP, FEMALE**



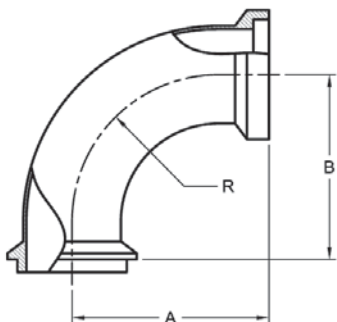
PART NUMBER	SIZE	A
16AI-15I-1	1	.500
16AI-15I-1.5	1-1/2	.500
16AI-15I-2	2	.687
16AI-15I-2.5	2-1/2	.687
16AI-15I-3	3	.687
16AI-15I-4	4	.750
16AI-15I-6	6	.750

**23BI - THERMOMETER CAP, MALE**



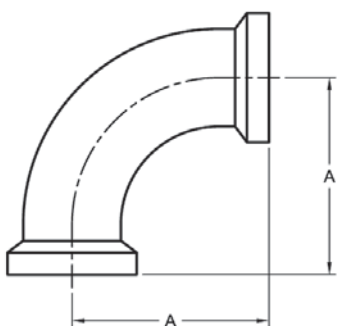
PART NUMBER	SIZE	A
23BI-1	1 X 1/2 NPT	.505
23BI-1.5	1-1/2 X 3/4 NPT	.505
23BI-2	2 X 3/4 NPT	.505
23BI-2.5	2-1/2 X 3/4 NPT	.692
23BI-3	3 X 3/4 NPT	.692
23BI-4	4 X 3/4 NPT	.755

**2FI - 90 DEGREE ELBOW, FEMALE X MALE ENDS**



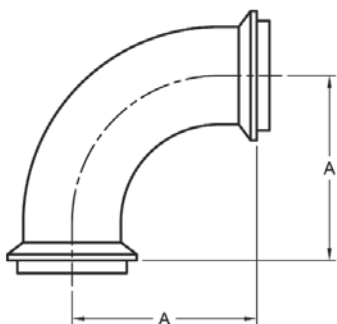
PART NUMBER	SIZE	A	B	R
2FI-1	1	2.286	2.089	1.500
2FI-1.5	1-1/2	3.192	2.996	2.250
2FI-2	2	4.036	3.780	3.000
2FI-2.5	2-1/2	4.911	4.600	3.750
2FI-3	3	5.723	5.412	4.500
2FI-4	4	7.348	7.037	6.000

**2CI - 90 DEGREE ELBOW, FEMALE ENDS**



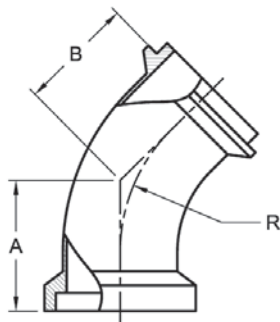
PART NUMBER	SIZE	A
2CI-1	1	2.286
2CI-1.5	1-1/2	3.192
2CI-2	2	4.036
2CI-2.5	2-1/2	4.911
2CI-3	3	5.723
2CI-4	4	7.348

**2EI - 90 DEGREE ELBOW, MALE ENDS**



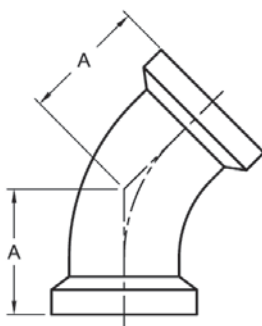
PART NUMBER	SIZE	A
2EI-1	1	2.089
2EI-1.5	1-1/2	2.996
2EI-2	2	3.780
2EI-2.5	2-1/2	4.600
2EI-3	3	5.412
2EI-4	4	7.037

**2PI - 45 DEGREE ELBOW, FEMALE X MALE ENDS**



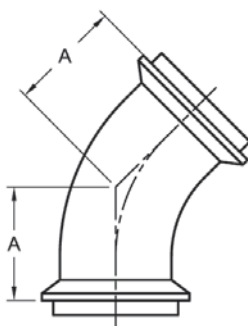
PART NUMBER	SIZE	A	B	R
2PI-1	1	1.411	1.214	1.500
2PI-1.5	1-1/2	1.879	1.526	2.250
2PI-2	2	2.286	2.030	3.000
2PI-2.5	2-1/2	2.723	2.412	3.750
2PI-3	3	3.098	2.787	4.500
2PI-4	4	3.848	3.537	6.000

**2KI - 45 DEGREE ELBOW, FEMALE ENDS**



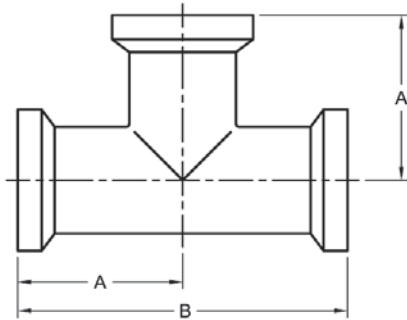
PART NUMBER	SIZE	A
2KI-1	1	1.411
2KI-1.5	1-1/2	1.879
2KI-2	2	2.286
2KI-2.5	2-1/2	2.723
2KI-3	3	3.098
2KI-4	4	3.848

**2HI - 45 DEGREE ELBOW, MALE ENDS**



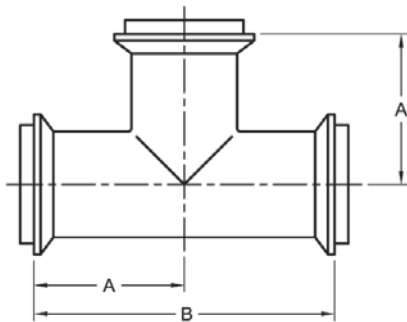
PART NUMBER	SIZE	A
2HI-1	1	1.214
2HI-1.5	1-1/2	1.526
2HI-2	2	2.030
2HI-2.5	2-1/2	2.412
2HI-3	3	2.787
2HI-4	4	3.537

7I - TEE, FEMALE ENDS



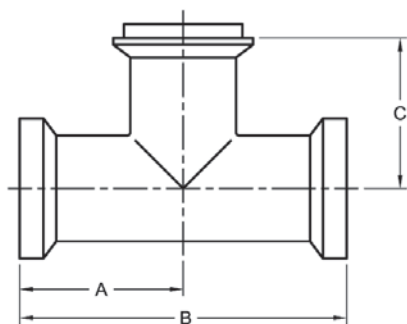
PART NUMBER	SIZE	A	B
7I-1	1	1.911	3.822
7I-1.5	1-1/2	2.598	5.196
7I-2	2	3.099	6.198
7I-2.5	2-1/2	3.505	7.010
7I-3	3	3.817	7.634
7I-4	4	4.786	9.572

7HI - TEE, MALE ENDS



PART NUMBER	SIZE	A	B
7HI-1	1	1.714	3.428
7HI-1.5	1-1/2	2.402	4.804
7HI-2	2	2.843	5.686
7HI-2.5	2-1/2	3.194	6.388
7HI-3	3	3.506	7.012
7HI-4	4	4.475	8.950

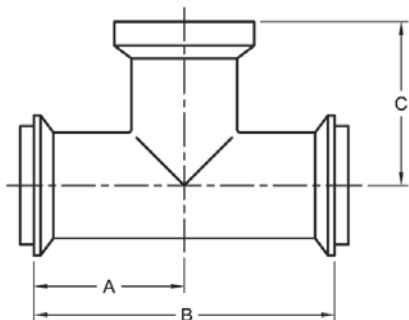
7AI - TEE, FEMALE RUN X MALE OUTLET



PART NUMBER	SIZE	A	B	C
7AI-1	1	1.911	3.822	1.714
7AI-1.5	1-1/2	2.598	5.196	2.402
7AI-2	2	3.099	6.198	2.843
7AI-2.5	2-1/2	3.505	7.010	3.194
7AI-3	3	3.817	7.634	3.506
7AI-4	4	4.786	9.572	4.475

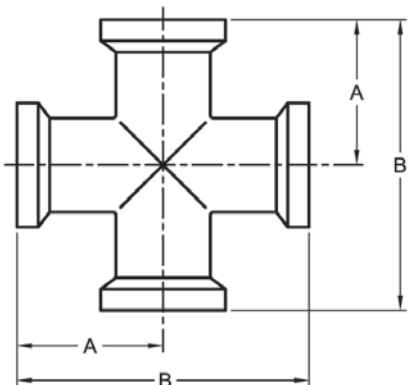


7EI - TEE, MALE RUN X FEMALE OUTLET



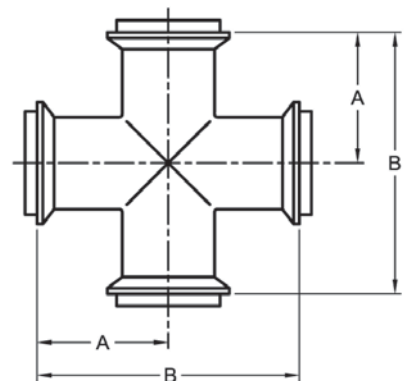
PART NUMBER	SIZE	A	B	C
7EI-1	1	1.714	3.428	1.911
7EI-1.5	1-1/2	2.402	4.804	2.598
7EI-2	2	2.843	5.686	3.099
7EI-2.5	2-1/2	3.194	6.388	3.505
7EI-3	3	3.506	7.012	3.817
7EI-4	4	4.475	8.950	4.786

9I - CROSS, FEMALE ENDS



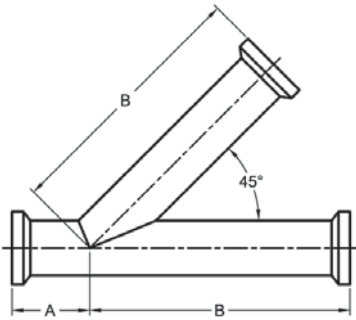
PART NUMBER	SIZE	A	B
9I-1	1	1.911	3.822
9I-1.5	1-1/2	2.598	5.196
9I-2	2	3.099	6.198
9I-2.5	2-1/2	3.505	7.010
9I-3	3	3.817	7.634
9I-4	4	4.786	9.572

9HI - CROSS, MALE ENDS



PART NUMBER	SIZE	A	B
9HI-1	1	1.714	3.428
9HI-1.5	1-1/2	2.402	4.804
9HI-2	2	2.843	5.686
9HI-2.5	2-1/2	3.194	6.388
9HI-3	3	3.506	7.012
9HI-4	4	4.475	8.950

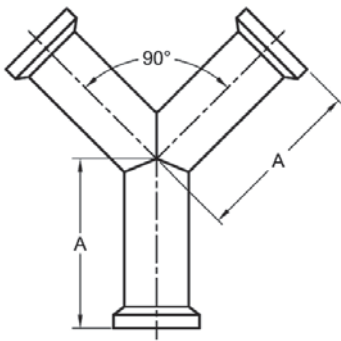
28AI - LATERAL WYE, FEMALE ENDS



PART NUMBER	SIZE	A	B
28AI-1	1	1.786	5.786
28AI-1.5	1-1/2	2.132	7.132
28AI-2	2	2.656	8.156
28AI-2.5	2-1/2	2.661	9.661
28AI-3	3	3.103	10.103
28AI-4	4	3.408	12.148

ALSO AVAILABLE WITH MALE I-LINE ENDS  
OTHER CONFIGURATIONS AVAILABLE UPON REQUEST

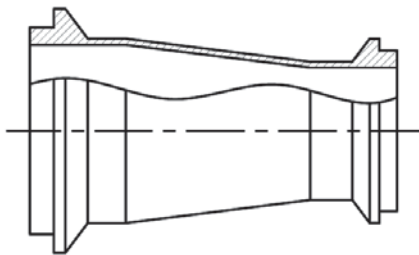
28BI - TRUE WYE, FEMALE ENDS



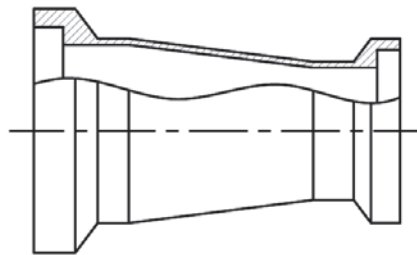
PART NUMBER	SIZE	A
28BI-1	1	3.786
28BI-1.5	1-1/2	3.942
28BI-2	2	5.036
28BI-2.5	2-1/2	6.161
28BI-3	3	7.223
28BI-4	4	9.348

ALSO AVAILABLE WITH MALE I-LINE ENDS  
OTHER CONFIGURATIONS AVAILABLE UPON REQUEST

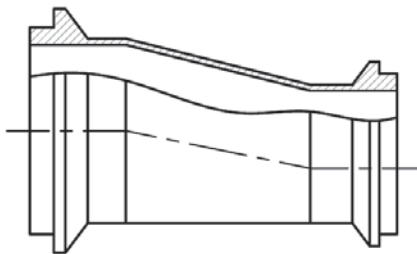
I-LINE REDUCERS AVAILABLE FROM STEEL & O'BRIEN:



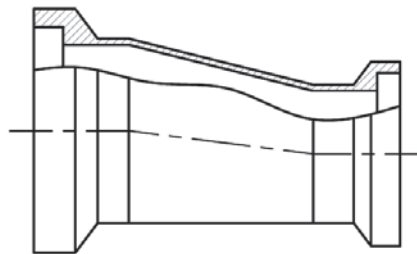
31-14I-14I (CONCENTRIC)



31-15I-15I (CONCENTRIC)

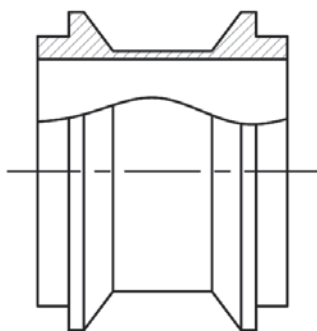


32-14I-14I (ECCENTRIC)

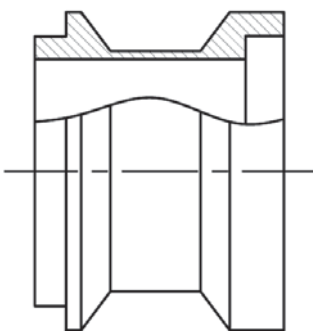


32-15I-15I (ECCENTRIC)

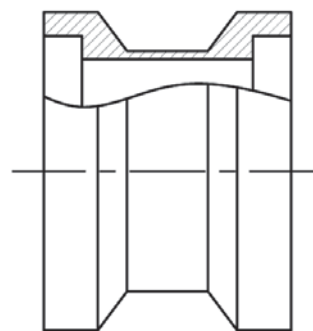
I-LINE ADAPTERS AVAILABLE FROM STEEL & O'BRIEN:



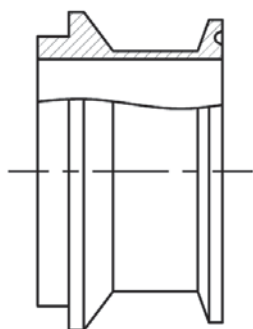
**17-14I-14I**  
(Male I-Line x Male I-Line)



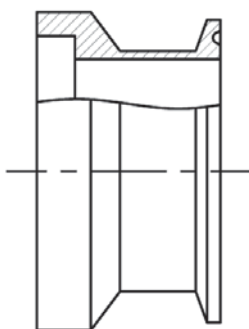
**17-14I-15I**  
(Male I-Line x Female I-Line)



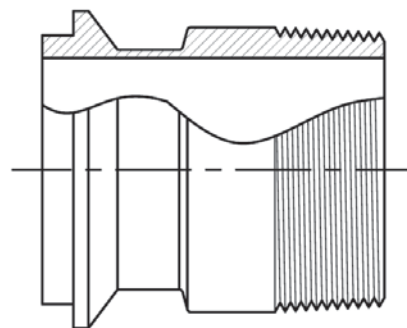
**17-15I-15I**  
(Female I-Line x Female I-Line)



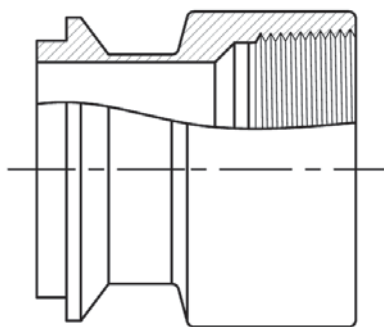
**17-14I-14MP**  
(Male I-Line x Clamp)



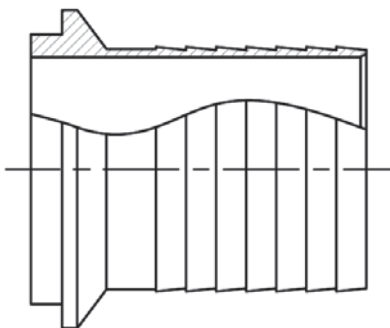
**17-15I-14MP**  
(Female I-Line x Clamp)



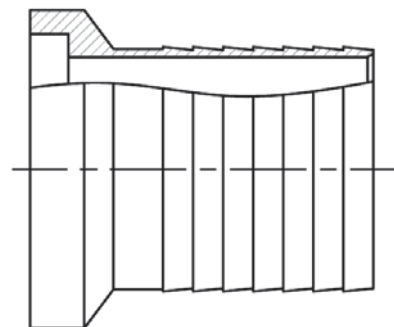
**21FI-14I**  
(Male I-Line x Male NPT)  
(also available w/Female I-Line)



**22FI-14I**  
(Male I-Line x Female NPT)  
(also available w/Female I-Line)

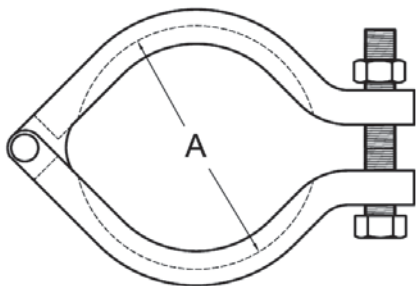


**14HRI**  
(Male I-Line x Rubber Hose)



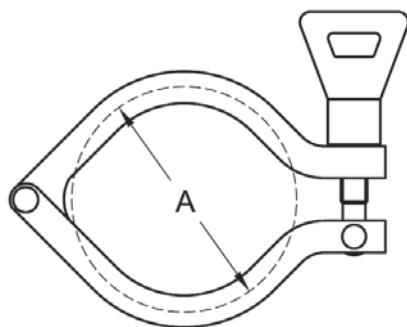
**15HRI**  
(Female I-Line x Rubber Hose)

13I - I-LINE CLAMP, BOLTED STYLE



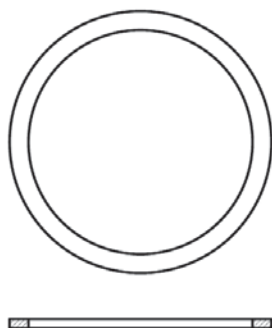
PART NUMBER	SIZE	A	PSI RATING @ 70° F	PSI RATING @ 250° F
13I-1	1 & 1-1/2	2.124	1220	1100
13I-2	2	2.843	900	830
13I-2.5	2-1/2	3.468	720	660
13I-3	3	4.031	600	550
13I-4	4	5.031	570	525
13I-6	6	7.688	150	75
13I-8	8	9.688	--	--

13IS - I-LINE CLAMP, WING NUT STYLE



PART NUMBER	SIZE	A	PSI RATING @ 70° F	PSI RATING @ 250° F
13IS-1	1 & 1-1/2	2.155	1220	1100
13IS-2	2	2.843	900	830
13IS-2.5	2-1/2	3.529	720	660
13IS-3	3	4.071	600	550
13IS-4	4	5.071	570	525
13IS-6	6	7.688	150	75
13IS-8	8	9.688	--	--

I-LINE GASKET



PART NUMBER	SIZE
40I-1	1
40I-1.5	1-1/2
40I-2	2
40I-2.5	2-1/2
40I-3	3
40I-4	4
40I-6	6
40I-8	8

AVAILABLE IN THE FOLLOWING MATERIALS:  
BUNA-N, EPDM, TEFLON, VITON, & SILICONE